

SINGLE BONNET ASSEMBLY

S.NO.	DESCRIPTION	QTY.	MATERIAL
11	GLAND WASHER	1	A479-316
10	LOCK PIN	1	A479-316
9	NON ROTATING VEE TIP	1	A564-630
8	HANDLE	1	A479-316
7	GRUB SCREW	1	STEEL
6	STEM	1	A479-316
5	GLAND NUT	1	A479-316
4	GLAND PACKING	1	P.T.F.E.
3	PACKING WASHER	1	A479-316
2	BONNET	1	A479-316
1	BODY	1	A479-316

**MATERIAL OF CONSTRUCTIONS**

PANAM 3 VALVE MANIFOLD PIPE TO PIPE DESIGN FOR CONNECTING SYSTEM IMPULSE LINES & TRANSMITTERS. THIS MANIFOLD CONSISTS TWO 1/4" NPT FEMALE CONNECTIONS ON 54mm. CENTERS, ONE EQUALIZER VALVE AND TWO BLOCK VALVE.

**FEATURES :**

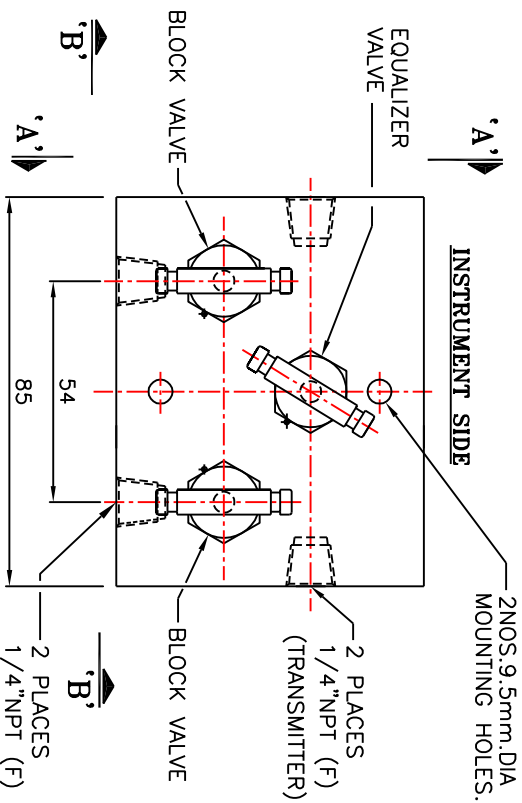
316 S.S. BODY CONSTRUCTION FOR SUPERIOR CORROSION RESISTANCE.  
 NON ROTATING VEE TIP PREVENTS GALLING & PROMOTES REPETITIVE SHUT-OFF.  
 OPTIONAL GRAPHOIL PACKING MATERIAL IS AVAILABLE FOR HIGH TEMP. RATING 1000°F @6000 PSI

**TESTING:**

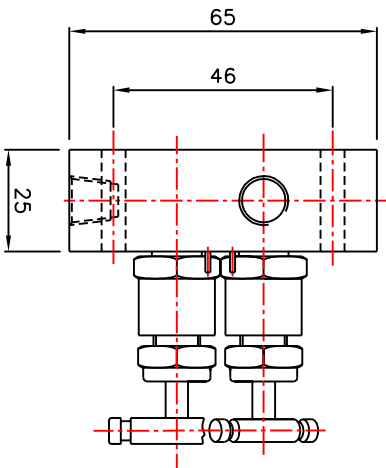
PNEUMATIC TEST:- EACH VALVE IS TESTED WITH NITROGEN AT 100 PSI IN ACCORDANCE WITH MSS-SP-61 FOR SEAT & PACKING LEAKAGE.  
 HYDRO TEST:- PERFORMED WITH PURE WATER IN ACCORDANCE WITH MSS-SP-61. BODY TESTED AT 1.5 TIMES & SEAT LEAKAGE TESTED AT 1.1 TIMES OF THE WORKING PRESSURE.

**DESIGN STANDARD :**

PRESSURE & TEMPERATURE RATING ARE SELECTED FROM ANSI B16.34 STANDARD CLASS VALVES BASED ON ANSI B16.34 CLASS 500 MR-01-75 OPTIONAL SOUR GAS SERVICE CONFIRMS TO NACE STD.



PROCESS SIDE

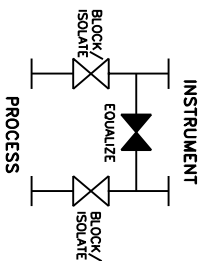


VIEW-'AA'

**PLAN**

TECHNICAL DATA				
Seat	Pr. Rot.	Temp. Rot.	Cv	Orifice
METAL SEAT (41300 kpa)	PTFE (-20 to 250° F (-29 to 121°C))	GRAFOL (-20 to 600° F (-29 to 315°C))	0.52 max.	4.8 mm.

NOTE:-1) DIMENSIONS ARE IN MM.FOR REFERENCE ONLY,SUBJECT TO CHANGE.  
 2) APPROXIMATE WEIGHT = 1.60 KGS. (3.6 LBS)



REV.	DESCRIPTION	BY	DATE

TITLE:- 3VALVE MANIFOLD (PIPE TO PIPE)  
 REMOTE MOUNTING-COMPACT DESIGN

DRN.	VPT	SCALE	NTS.
CHD.	VA	DATE	27.01.2005
APPD.	JP	DRG.NO.:	3VM-SS-4-RMCD
			RO



**PANAM ENGINEERS**  
 AN ISO 9001 : 2000 COMPANY  
 MUMBAI - INDIA