

S.NO.	DESCRIPTION	QTY.	MATERIAL
14	NON ROTATING VEE TIP	3	A564-630
13	WASHER	3	A479-316
12	DUST CAP	3	PLASTIC LD.
11	LOCK PIN	3	A479-316
10	HANDLE	3	A479-316
9	GRUB SCREW	3	STEEL
8	LOCK NUT	3	A479-316
7	SPINDLE	3	A479-316
6	PACKING WASHER	3	A479-316
5	PACKING	3	PTFE/GRAFOL
4	WASHER	3	A479-316
3	GLAND RETAINER	3	A479-316
2	BONNET	3	A479-316
1	BODY	1	A479-316

PANAM 3 VALVE MANIFOLD I-TYPE PIPE TO FLANGE CONNECTION DESIGN FOR CONNECTING SYSTEM IMPULSE LINES AND TRANSMITTERS. THIS MANIFOLD CONSISTS TO 1/2" NPT FEMALE CONNECTIONS ON 54mm(2-1/8") CENTERS AND OF ONE EQUALIZER VALVE AND TWO BLOCK VALVES 1/4"NPT PURGE CONNECTIONS ARE OPTIONAL.

FEATURES :

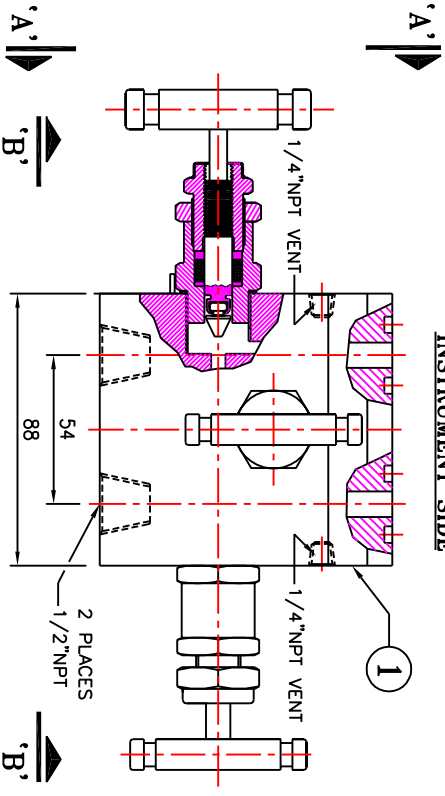
316 S.S. BODY CONSTRUCTION FOR SUPERIOR CORROSION RESISTANCE.
NON ROTATING VEE TIP PREVENTS GALLING & PROMOTES REPETITIVE SHUT-OFF.
OPTIONAL GRAPHOL PACKING MATERIAL IS AVAILABLE FOR HIGH TEMP. RATING 1000°F @6000 PSI

TESTING:

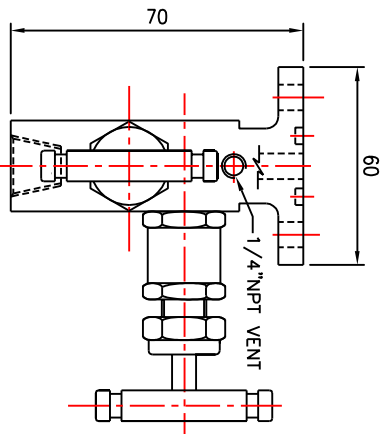
PNEUMATIC TEST:- EACH VALVE IS TESTED WITH NITROGEN AT 100 PSI IN ACCORDANCE WITH MSS-SP-61 FOR SEAT & PACKING LEAKAGE.
HYDRO TEST:- PERFORMED WITH PURE WATER IN ACCORDANCE WITH MSS-SP-61 BODY TESTED AT 1.5 TIMES & SEAT LEAKAGE TESTED AT 1.1 TIMES OF THE WORKING PRESSURE

DESIGN STANDARD :

PRESSURE & TEMPERATURE RATING ARE SELECTED FROM ANSI B16.34 STANDARD CLASS VALVES BASED ON MR-01-75 OPTIONAL SOUR GAS SERVICE CONFIRMS TO MACE STD.

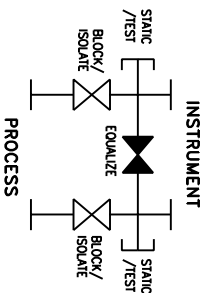


PLAN



TECHNICAL DATA			
Seat	Pr. Rot.	Temp. Rot.	Cv
METAL SEAT	6000 PSI (41300 kpa)	PTFE (-20 to 250° F (-29° to 121°C)) GRAFOL (-20 to 600° F (-29° to 315°C))	0.52 max. 4.8 mm.

NOTE:-1) DIMENSIONS ARE IN MM.FOR REFERENCE ONLY.SUBJECT TO CHANGE.
2) APPROXIMATE WEIGHT = 1.8 KGS. (3.98 LBS)



REV.	DESCRIPTION	REVISION	BY	DATE

TITLE:- 3-VALVE MANIFOLD (PIPE TO FLANGE)

DRN.	VPT	SCALE	- NTS.
CHD.	VA	DATE	- 28.01.2005
APPD.	JP	DRG.NO.:	3VM-SS-8-T
			RO



PANAM ENGINEERS

AN ISO 9001 : 2000 COMPANY
MUMBAI - INDIA