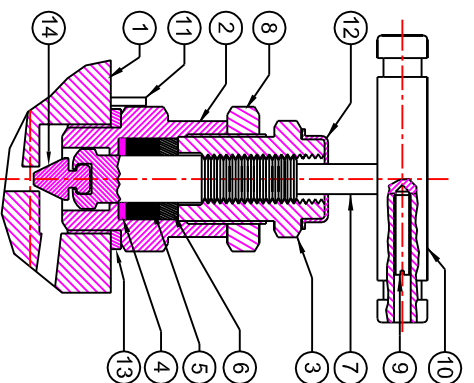


VIEW - 'BB'

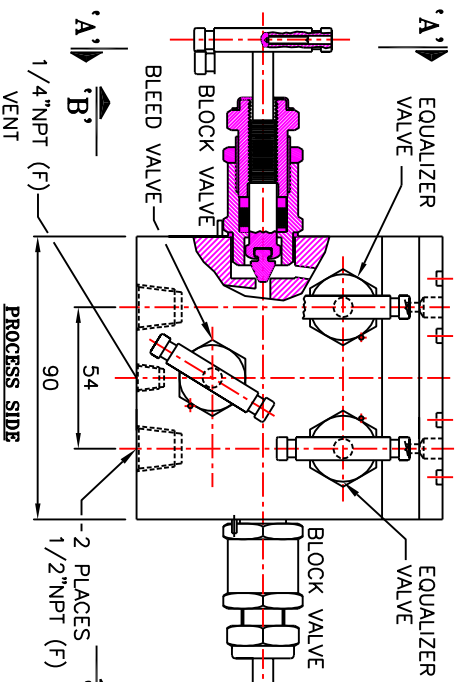


BONNET ASSEMBLY

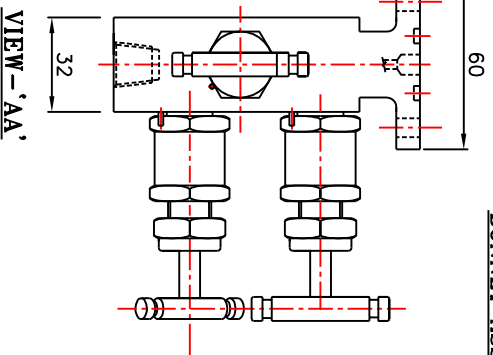
S.NO.	DESCRIPTION	QTY.	MATERIAL
14	NON ROTATING VEE TIP	5	A564-630
13	WASHER	5	A479-316
12	DUST CAP	5	PLASTIC LD.
11	LOCK PIN	5	A479-316
10	HANDLE	5	A479-316
9	GRUB SCREW	5	STEEL
8	LOCK NUT	5	A479-316
7	SPINDLE	5	A479-316
6	PACKING WASHER	5	A479-316
5	PACKING	5	PTFE/GRAFOL
4	WASHER	5	A479-316
3	GLAND RETAINER	5	A479-316
2	BONNET	5	A479-316
1	BODY	1	A479-316

MATERIAL OF CONSTRUCTIONS

INSTRUMENT SIDE

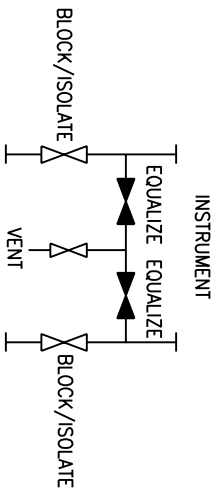


PLAN



VIEW - 'AA'

TECHNICAL DATA			
Seat	P. Rot.	Temp. Rot.	Cv
METAL SEAT	6000 PSI (41300 kpa)	PTFE -20 to 250° F (-29° to 121°C) GRAFOL -20 to 600° F (-29° to 315°C)	0.52 max.
			Orifice 4.8 mm.



SCHEMATIC

PANAM 5-VALVE MANIFOLD PIPE TO FLANGE CONNECTION DESIGNED FOR CONNECTING SYSTEM IMPULSE LINES & TRANSMITTERS. THIS MANIFOLD CONSISTS TO 1/2" NPT FEMALE CONNECTIONS ON 54mm (2-1/8") CENTERS AND OF TWO EQUALIZER VALVE, TWO BLOCK VALVES & ONE VENT VALVE.

FEATURES :

316 S.S. BODY CONSTRUCTION FOR SUPERIOR CORROSION RESISTANCE. NON ROTATING VEE TIP PREVENTS GALLING & PROMOTES REPETITIVE SHUT-OFF. OPTIONAL GRAPHOL PACKING MATERIAL IS AVAILABLE FOR HIGH TEMP. RATING 1000°F @6000 PSI.

TESTING:

PNEUMATIC TEST: - EACH VALVE IS TESTED WITH NITROGEN AT 100 Psi IN ACCORDANCE WITH MSS-SP-61 FOR SEAT & PACKING LEAKAGE.
HYDRO TEST: - PERFORMED WITH PURE WATER IN ACCORDANCE WITH MSS-SP-61. BODY TESTED AT 1.5 TIMES & SEAT LEAKAGE TESTED AT 1.1 TIMES OF THE WORKING PRESSURE.

DESIGN STANDARD :

PRESSURE & TEMPERATURE RATING ARE SELECTED FROM ANSI B16.34 STANDARD CLASS VALVES BASED ON ANSI B16-CLASS 2500 OPTIONAL SOUR GAS SERVICE CONFORMS TO MACE STD. MR-01-75

REV.	DESCRIPTION	REVISION	BY	DATE

TITLE: -		SCALE - NTS.	
DRN.	VPT	DATE -	01.02.2005
CHD.	VA	DRGNO.:	5VM-SS-8-T
APPD.	JP		



AN ISO 9001 : 2000 COMPANY
MUMBAI - INDIA

NOTE:- 1) DIMENSIONS ARE IN MM.FOR REFERENCE ONLY.SUBJECT TO CHANGE.
2) APPROXIMATE WEIGHT = 2.45 KG.